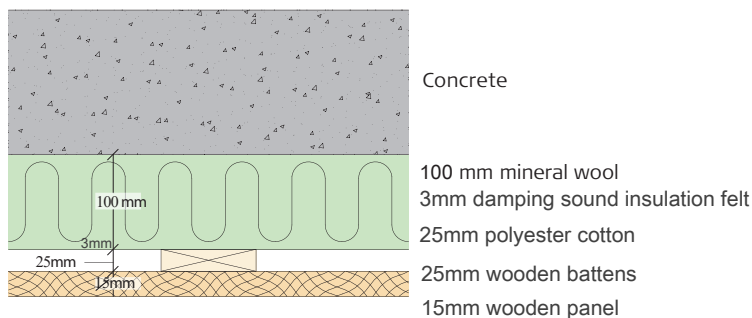


Public Theater_Wooden Wall

Sound absorption measurements for
15mm wooden panel, installed on 25mm wooden battens
(3mm damping sound insulation felt with 25mm Polyester cotton) plus
100 mm mineral wool

VERTICAL SCHEMATIC DIAGRAM



SOUND ABSORPTION MEASUREMENTS

Hz	100	125	160	200	250	315	400	500	630	800	1000	1250	1600	2000	2500	3150	4000	5000
α	0,41	0,59	0,88	1,04	0,97	1,00	0,97	0,94	0,93	0,89	0,88	0,88	0,84	0,85	0,89	0,93	0,98	1,06

$\alpha_w = 0,90$ - NRC = 0,95 - Absorption class A.

Measurement of the sound absorption coefficients were carried out using the reverberation room method

The measurements are carried out by KUS Acoustics.

