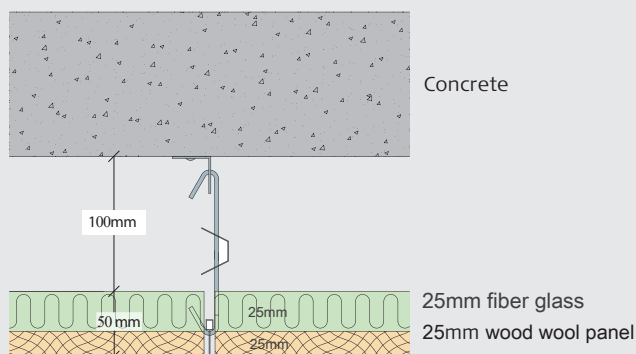


# Public Theater\_Wood Wool Ceiling

Sound absorption measurements for  
Wood wool panel 25 mm plus 25mm fiber glass,  
suspended 100 mm

## VERTICAL SCHEMATIC DIAGRAM



## SOUND ABSORPTION MEASUREMENTS

Measurement of the  
sound absorption  
coefficients were  
carried out using the  
reverberation room  
method

The measurements are  
carried out by KUS  
Acoustics.

Hz	100	125	160	200	250	315	400	500	630	800	1000	1250	1600	2000	2500	3150	4000	5000
a	0,35	0,54	0,61	0,74	0,95	0,98	1,01	1,02	1,02	1,04	1,11	1,01	0,95	0,87	0,88	0,94	1,01	1,09

$\alpha_w = 1,00$  - NRC = 0,95 - Absorption class A.

